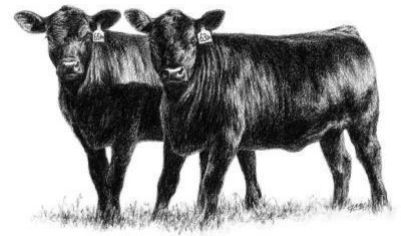


Randolph County 4-H/FFA Livestock Show Junior Beef Cattle Show



Saturday, August 3, 2024

2368 NC Hwy. 42 S., Asheboro, NC



Check In/Weigh-In: 8:00am - 8:30am
STEER SHOW at 9:00am

HEIFER SHOW immediately following the Steer Show

RULES AND REGULATIONS FOR STEER SHOW

1. Open to youth exhibitors age 5-18 (as of January 1, 2024).
2. This show is open to 4-H and FFA members.
3. Animals will be inspected upon check-in by a Veterinarian
4. Registration for STEER show is required by **July 19 2024**.
5. Exhibitors must have trained the animals from July 1, 2024. Ownership by exhibitors is not required, but all animals must be under exhibitors' care.
6. Steers can have two permanent teeth. All other teeth must be baby teeth and in place.
7. Steers must be halter broke and dehorned. Unruly animals, which may endanger the safety of the exhibitors, will be asked to leave the ring.
8. Each exhibitor is limited to two entries. If animals are in the same class, another participant must show the additional animal. Adults are not eligible to show.
9. Classes will be divided by steer weights (light, middle and heavy). A Grand and Reserve Champion will be selected from the class winners.
10. All animals must be tied when not accompanied by an exhibitor.
11. No wash facilities will be available, so we encourage you to have your animals ready to show.
12. All participants are automatically entered in their respective showmanship classes.

RULES AND REGULATIONS FOR HEIFER SHOW

1. Open to youth exhibitors age 5-18 (as of January 1, 2024).
2. This show is open to 4-H and FFA members.
3. Animals will be inspected upon check-in by a Veterinarian
4. Registration for HEIFER show is required by **July 19, 2024**.
5. Exhibitors must have trained the animals from July 1, 2024. Ownership by exhibitors is not required, but all animals must be under exhibitors' care.
6. All breeds will be shown in one class. Classes will be divided based on age of heifer and will be announced on the day of the show.
7. Heifers must be halter broken.
8. Each exhibitor is limited to two entries. If animals are in the same class, another participant must show the additional animal. Adults are not eligible to show.
9. A Grand Champion and Reserve Champion heifer will be picked from the class winners.
10. All animals must be tied when not accompanied by an exhibitor.
11. No wash facilities will be available, so we encourage you to have your animals ready to show.
12. All participants are automatically entered in their respective showmanship classes.

Attention non-circuit and circuit participants: This year the 4-H Farm Credit Showmanship Circuit is requiring participants to register to participate in the circuit by 5:00 pm on July 19, 2024 at <https://lee.ces.ncsu.edu/2024-4-h-farm-credit-showmanship-circuit/>. You will then need to register for county shows individually. For the Randolph County show (non-circuit and circuit members), you may register by google form at the link below .

The deadline to register for Randolph County's show is July 19, 2024.

***4-H Farm Credit Showmanship Circuit Members need to register for this show using the online registration form which can be found on <https://lee.ces.ncsu.edu/2024-4-h-farm-credit-showmanship-circuit/> by July 19, 2024.**

****For non 4-H Farm Credit Showmanship Circuit Show Members, please register online through Google Forms by July 19, 2024.**

The Google Forms link can be found at <https://go.ncsu.edu/24randolphlivestockshow>

**Randolph County 4-H/FFA Livestock Show
Junior Beef Cattle Show
Saturday, August 3, 2024**

***Steer Show**

* Number of classes will depend on number of cattle entered *

	1st	2nd	3rd	4th	5th	Participation
Light	\$30	\$25	\$20	\$15	\$10	\$5
Middle	\$30	\$25	\$20	\$15	\$10	\$5
Heavy	\$30	\$25	\$20	\$15	\$10	\$5

Grand Champion \$30
Reserve Champion \$25

***Heifer Show**

* Number of classes will depend on number of cattle entered *

	1st	2nd	3rd	4th	5th	Participation
March & April 2024	\$30	\$25	\$20	\$15	\$10	\$5
Jan & February 2024	\$30	\$25	\$20	\$15	\$10	\$5
Nov & December 2023	\$30	\$25	\$20	\$15	\$10	\$5
Sept & October 2023	\$30	\$25	\$20	\$15	\$10	\$5
July & August 2023	\$30	\$25	\$20	\$15	\$10	\$5
May & June 2023	\$30	\$25	\$20	\$15	\$10	\$5
March & April 2023	\$30	\$25	\$20	\$15	\$10	\$5
Jan & February 2023	\$30	\$25	\$20	\$15	\$10	\$5
Nov & December 2022	\$30	\$25	\$20	\$15	\$10	\$5
Sept. & October 2022	\$30	\$25	\$20	\$15	\$10	\$5

Grand Champion \$30
Reserve Champion \$25

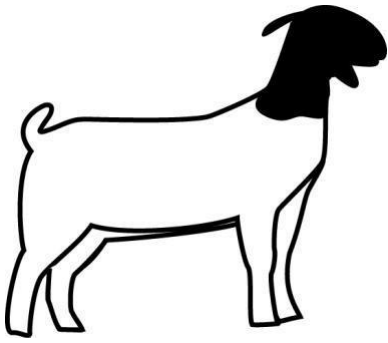
There will be a costume class for cattle!! Please come prepared and notify us at time of registration if your child is wanting to participate.

We will also be having a Cow Costume Contest at the end of the show.

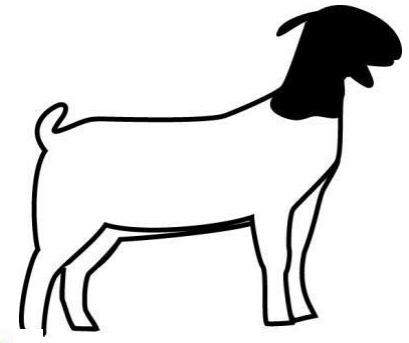
Food opportunities will be emailed to participants closer to the show date.

For more questions, please contact Randolph County Cooperative Extension Office
Allison Walker Allen
allison_walker@ncsu.edu or call/text (336) 467-2927

Adam Lawing
adam_lawing@ncsu.edu or call (336) 318-6000



**Randolph County 4-H/FFA Livestock Show
Junior Meat Goat Show
Saturday, August 3, 2024**



**Check-In/Weigh-In Time 10:30am - 11:30am
WETHER SHOW begins at 1:00pm
DOE SHOW immediately following Wether Show**

RULES AND REGULATIONS FOR MEAT GOAT SHOW

1. Open to youth exhibitors age 5-18 (as of January 1, 2024).
2. This show is open to 4-H and FFA members.
3. Animals will be inspected upon check-in by a Veterinarian
4. Registration for GOAT show is required by **July 19, 2024**.
5. Exhibitors must have trained the animals from July 1, 2024. Ownership by exhibitors is not required, but all animals must be under exhibitors' care.
6. All goats must meet NCDA Scrapie regulations. Those animals that do not will have to leave the show grounds.
7. ALL classes (does and wethers) will be assigned by weights.
8. Classes arranged at the discretion of the show officials. A Grand & Reserve Champion will be selected from the class winners.
9. Each participant is limited to 2 does and/or 2 wethers. If animals are in the same class, another participant must show the additional animal. Adults are not eligible to show.
10. All animals must be tied when not accompanied by an exhibitor.
11. No wash facilities will be available, so we encourage you to have your animals ready to show.
12. All participants are automatically entered in their respective showmanship classes.

***4-H Farm Credit Showmanship Circuit Members need to register for this show using the online registration form which can be found on <https://lee.ces.ncsu.edu/2024-4-h-farm-credit-showmanship-circuit/> by July 19, 2024**

****For non 4-H Farm Credit Showmanship Circuit Show Members, please register online through Google Forms by July 19, 2024.**

The Google Forms link can be found at <https://go.ncsu.edu/24randolphlivestockshow>

For more questions, please contact Randolph County Cooperative Extension Office

Allison Walker Allen
allison_walker@ncsu.edu or call/text (336) 467-2927

Adam Lawing
adam_lawing@ncsu.edu or call (336) 318-6000

Randolph County 4-H/FFA Livestock Show
Junior Meat Goat Show
Saturday, August 3, 2024

***Market Wether Classes**

* Number of classes will depend on number of goats entered *

	1st	2nd	3rd	4th	5th	Participation
Light	\$30	\$25	\$20	\$15	\$10	\$5
Middle	\$30	\$25	\$20	\$15	\$10	\$5
Heavy	\$30	\$25	\$20	\$15	\$10	\$5

Grand Champion \$30

Reserve Champion \$25

***Market Doe Classes**

* Number of classes will depend on number of goats entered *

	1st	2nd	3rd	4th	5th	Participation
Light	\$30	\$25	\$20	\$15	\$10	\$5
Middle	\$30	\$25	\$20	\$15	\$10	\$5
Heavy	\$30	\$25	\$20	\$15	\$10	\$5

Grand Champion \$30

Reserve Champion \$25

There will be a costume class for goats!! Please come prepared and notify us at time of registration if your child is wanting to participate.

We will also be having a Goat Obstacle Course. Please sign up for this course at check in.

Food opportunities will be emailed to participants closer to the show date.

**Randolph County 4-H/FFA Livestock Show
August 3, 2024**

RULES & REGULATIONS FOR SHOWMANSHIP CLASSES

Will be held at BEGINNING of each species show.

1. Exhibitors are automatically entered in their Showmanship classes.
2. Exhibitor age and class entry will be determined by their age as of January 1, 2024.
3. Classes will be divided into: Cloverbuds (ages 5-7), Junior (ages 8-10), Intermediate (ages 11-13), and Senior (ages 14-18).
4. Judging will be based solely on showmanship.
5. Cloverbuds will not be placed, but will receive participation prize & ribbon.
6. Steers are not eligible for points in showmanship in the 4-H Farm Credit Showmanship Circuit.
7. There will be a Pee Wee Show. The Pee Wee must be accompanied by an adult that is 18 or older.

Heifer or Steer Showmanship

Cloverbud (5-7year olds) non-competitive \$5.00

Junior (8-10)

Intermediate (11-13)

Senior (14-18)

1st	2nd	3rd	4th	5th	Participation
\$30	\$25	\$20	\$15	\$10	\$5
\$30	\$25	\$20	\$15	\$10	\$5
\$30	\$25	\$20	\$15	\$10	\$5

Goat Showmanship

Cloverbud (5-7year olds) non-competitive \$5.00

Junior (8-10)

Intermediate (11-13)

Senior (14-18)

1st	2nd	3rd	4th	5th	Participation
\$30	\$25	\$20	\$15	\$10	\$5
\$30	\$25	\$20	\$15	\$10	\$5
\$30	\$25	\$20	\$15	\$10	\$5

***All Cloverbuds will show NON competitively.** If another showman would like to show a Cloverbud Showman's animal in type classes, please list the animal on the registration forms of the showman of appropriate age. This change will not be accepted the day of the show. Cloverbuds will participate in Showmanship and then at the beginning of the type classes there will be one class designated for Cloverbuds to show their animal again.*

NC State University and N.C. A&T State University are collectively committed to positive action to secure equal opportunity and prohibit discrimination and harassment regardless of age, color, disability, family and marital status, gender identity, genetic information, national origin, political beliefs, race, religion, sex (including pregnancy), sexual orientation and veteran status. NC State, N.C. A&T, U.S. Department of Agriculture, and local governments cooperating.
Accommodation requests related to a disability should be made by July 19, 2024 to Allison Walker Allen, (336) 467-2927, allison_walker@ncsu.edu.