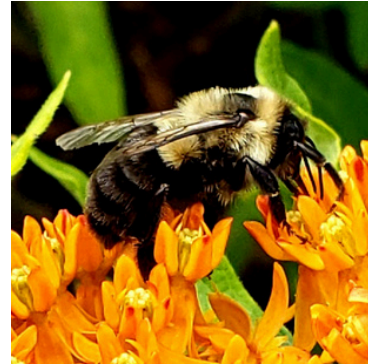


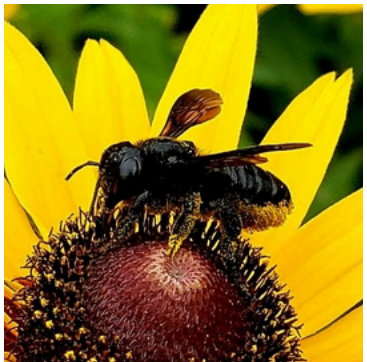
Bee Scavenger Hunt



Honey Bee, *Apis mellifera*- Forages from multiple sources. Managed as livestock. Native to Europe and Africa. Photo by Tracie Bowers



Bumble Bee, *Bombus* sp., are native to North America and are social (and fuzzy)! Photo by Tracie Bowers



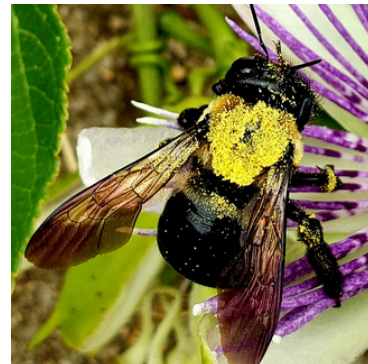
Female All-Black Leafcutter Bee, *Megachile xylocopoides*- Looks like Carpenter bee. Photo by Tracie Bowers



Metallic Green Sweat Bee, *Agapostemon* sp., attracted to the salt in your sweat. Photo by Meredith Favre



Sweat Bee, *Halictus* sp.- General forager, semi-social ground nester (may share tunnel entrance with others). Photo by Tracie Bowers



Carpenter bee, *Xylocopa* sp.- General forager, tunnel nester in wooden structures and old logs. Photo by Tracie Bowers

Developed by Meredith Favre, Local Food Agent- Lee County, Tracie Bowers, Extension Master Gardener volunteer in Lee County, and Amanda Wilkins, Horticulture Agent- Lee County, April 2024